

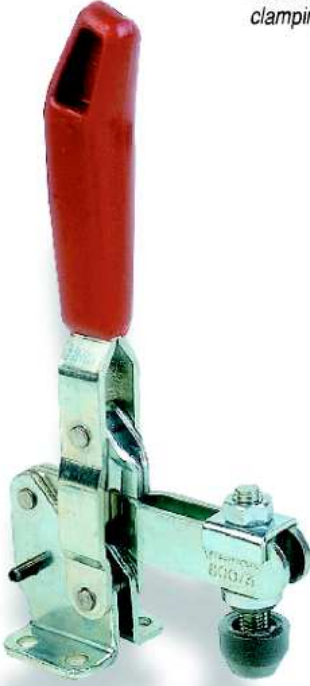
No.800

Dik Bağlama Elemanları



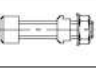

Galvaniz kaplı, kırmızı renkte ve yağa mukavim plastik tutma saplı, sertleştirilmiş ve yağlanmış yataklama burçlu. Baskı civatası ve koruyucu lastik başlık ile birlikte komple.

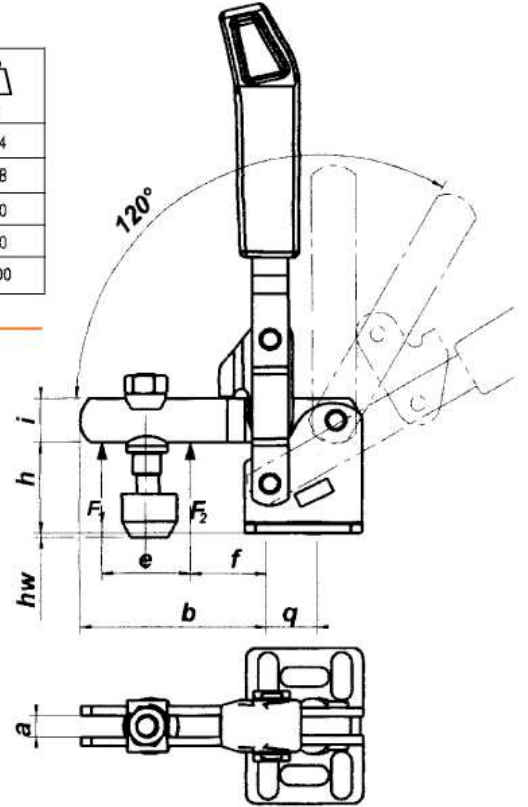
Vertical acting toggle clamps

Zinc plated, with red oil resistant plastic handles, bushes case hardened and greased, supplied complete with clamping screw and rubber nose.



Boy / Size	a	b	c	d	e	f	g	h	i	k	l	m	n	p	q	α
1	5.5	41	16	4.5	19	11	25	19.5	10	5.5	-	27	-	-	12	88°
2	6.2	51	20	5.3	24	10	23	26	12	5	12	30	26	5	13	100°
3	8.5	72	20	7	29	27	-	36	18	7.5	-	30	-	-	16	105°
4	9	101	34.5	8.5	61	30	34	48	20	9.25	17	45	-	-	22	105°
5	14	137	45	8.5	88	40	45	55	25	10.5	25	50	45	5	31.5	115°

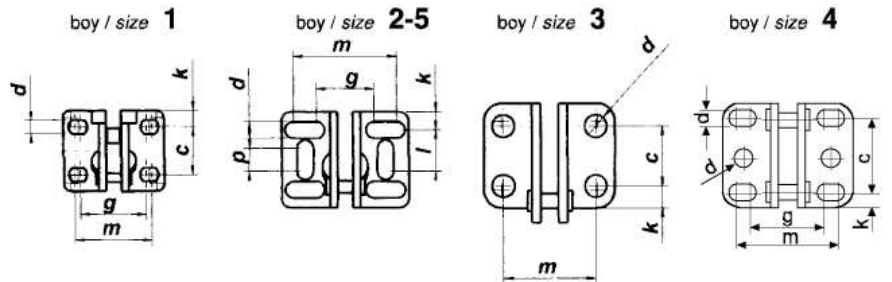
Boy / Size	F1 (kN)	F2 (kN)			hw		
1	0.8	1.1	105	60	-4 ÷ 3	M5 x 30	114
2	1.0	1.2	140	76	-3 ÷ 6	M6 x 35	178
3	1.8	2.5	200	105	0 ÷ 12	M8 x 45	400
4	2.0	3.0	230	140	-8 ÷ 21	M8 x 65	630
5	3.0	5.0	300	190	10 ÷ 34	M12 x 80	1500



No.800/P

Paslanmaz Çelikten Dik Bağlama Elemanları

Paslanmaz Çelikte Boy 4 ve 5 tipi mevcut değildir.



Boy / Size	a	b	c	d	e	f	g	h	i	k	l	m	n	p	q	α
1	5.5	41	16	4.5	19	11	25	19.5	10	5.5	-	27	-	-	12	88°
2	6.2	51	20	5.3	24	10	23	26	12	5	12	30	26	5	13	100°
3	8.5	72	20	7	29	27	-	36	18	7.5	-	30	-	-	16	105°